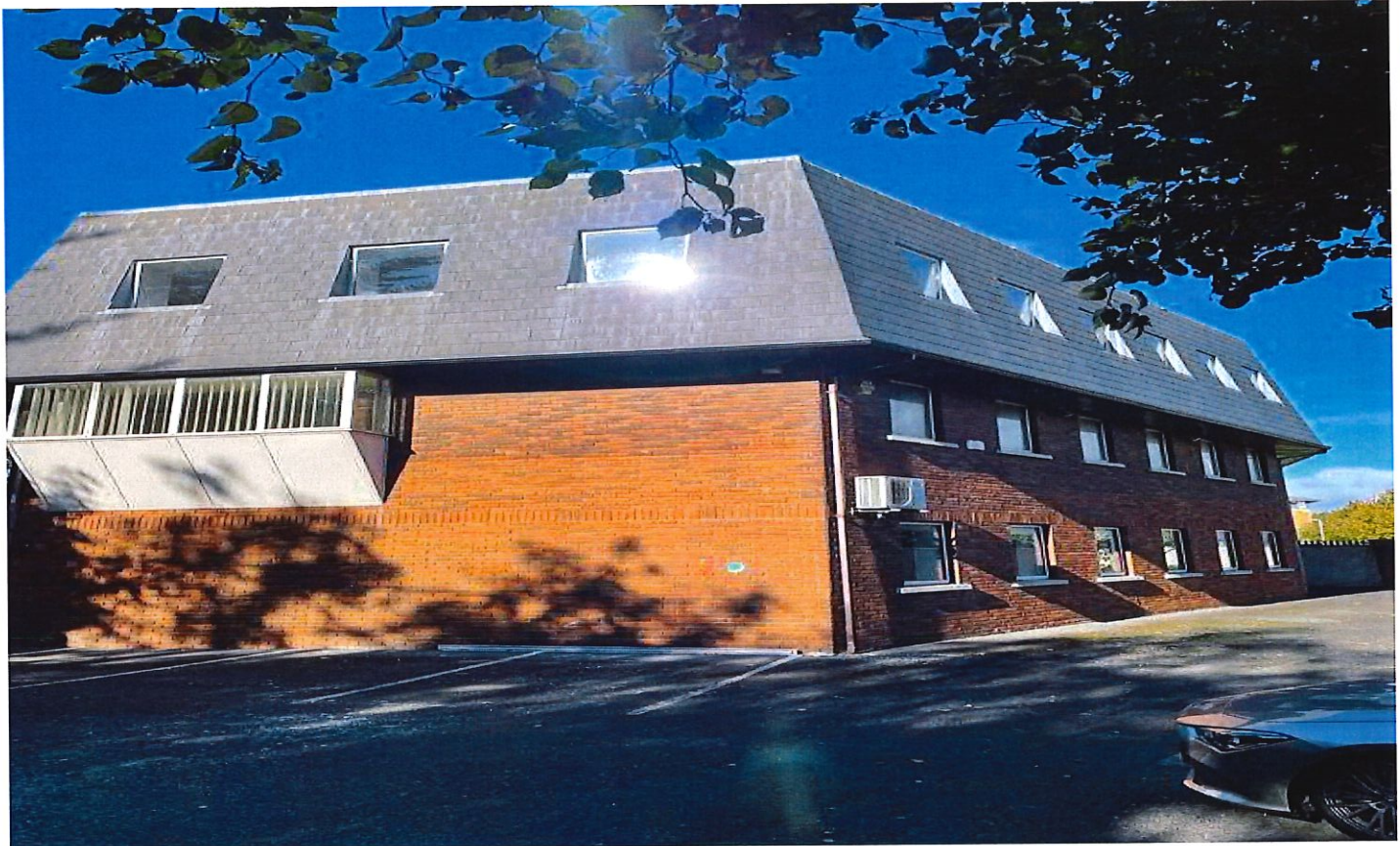


## Shrewsbury House, Cabinteely, Dublin 18, D18 KX60

**TO LET**



### Details:

- \* Modern Detached Offices over three floors.
- \* Passenger Lift.
- \* Close to Village, Cafes and Dunnes Stores.
- \* Ideal as Offices, Medical or Childcare Facility.
- \* Adjoining Bank of Ireland and the N11. Easy access to Sandyford, City and M50. Excellent Transport Links.
- \* Presented in excellent condition.
- \* Fully fitted with suspended ceilings, lighting and New Carpets.
- \* Open plan offices on each level with scope to sub divide.

Floor Area:	300 - 900 Sq.M.
Parking:	25 Spaces
Rates:	T.B.C.
S. Charges:	To be advised
BER Rating:	D2
Rent:	On Request

**NO VAT APPLICABLE**

Contact: John Agar - jagar@agar.ie - 01 2137777

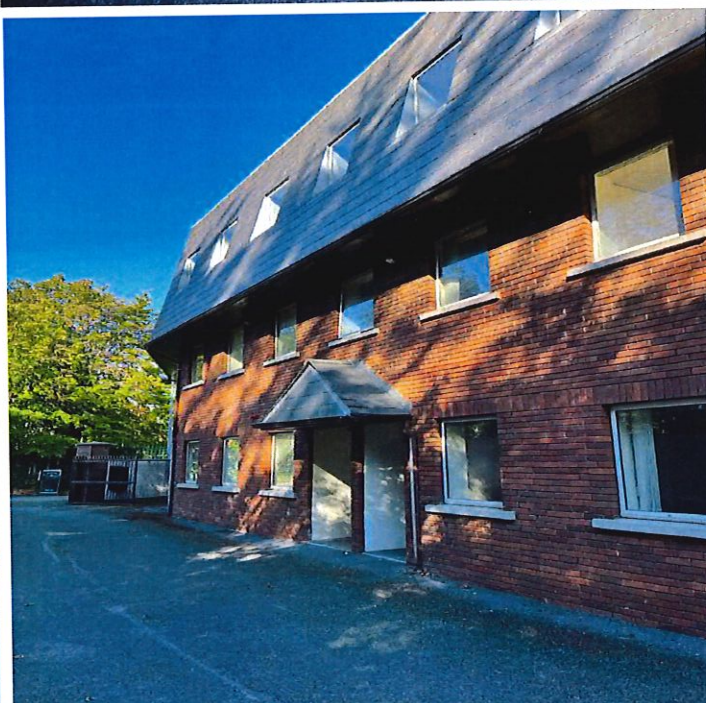
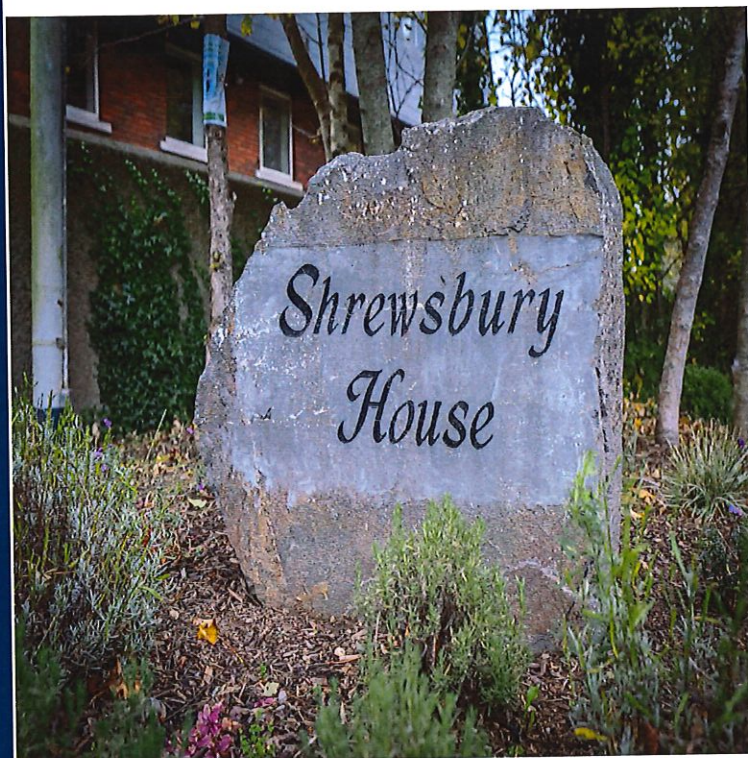
Subject to Contract

**VIEWING BY APPOINTMENT**



Shrewsbury House, Cabinteely, Dublin 18, D18 KX60.

**TO LET**



Contact: John Agar - jagar@agar.ie - 01 2137777

Subject to Contract

**VIEWING BY APPOINTMENT**



Disclaimer: The information contained in our advertisements/brochures are issued by Agar on the understanding that all negotiations are conducted through them. Whilst every care has been taken in the preparation of the information it does not constitute an invitation to treat, an offer or a contract of any nature whether express or implied. All descriptions, dimensions, maps, plans, artist impressions, references to condition, permissions or licences of use or occupation, access and other details are for guidance only and may be subject to change, without prior notification. The information is given in good faith but no intending purchaser/tenant should rely on them as statements or representations of fact and is specifically advised to undertake its own due diligence (at its own expense) to satisfy itself as to the accuracy and/or correctness of the information given. None of Agar, its employees or agents makes or gives any warranty or representations whether express or implied with respect to the particulars and/or information and which are to the fullest extent permitted by law, disclaimed; furthermore, such parties accept no liability in respect of any loss suffered by intending purchaser/tenant or any third party arising out of the information. Prices are quoted exclusive of applicable taxes such as VAT & stamp duty (unless otherwise stated) and all negotiations are conducted on the basis that the purchaser/lessee shall be liable for VAT arising on the transaction. All maps produced by permission on the Ordnance Survey Ireland Licence No. AU 0002620 © Government of Ireland. PSRA No.003810.